

## TUBE IP54

Product Code DT.070828(add suffix see below)

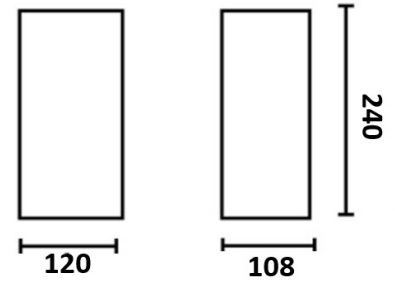
IP54 Zone 2 **CE** **LED** IEE : A+ EN 60598.

DESCRIPTION / Round wall mounted LED fixture, discreet up/down lighting effect. IP rated.

Dimensions (mm)  
h240 x 108 x 120

WHY USE THIS: Contemporary anti-glare look. Suitable for all general lighting applications, IP54

Cut-out (mm)  
N/A



<b>material light fixture</b>	Die cast aluminium
<b>colours &amp; finish/ (suffix)</b>	White - 11 or -RAL xxxx
<b>light source &amp; voltage options</b> (PLEASE CONTACT US FOR ALTERNATIVE SOURCES)	a) 2 x 6.5w LED 45 deg (830 lms) 240v b) c) d)
<b>colour temperature /(suffix)</b>	<b>3000K</b>
<b>CRI (colour render) /(suffix)</b>	83
<b>MacAdam</b>	3
<b>Controls options /(suffix)</b>	On / off integral 0-10v / DALI with remote driver
<b>Optional Accessories</b>	
<b>AV. Weight (kg)</b>	2.5
<b>Emergency Available?</b>	No
<b>Special Notes</b>	

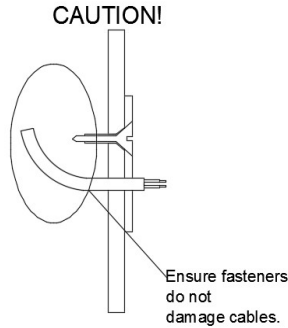
### technical performance

height(m)	Ø(m)	lux levels
1m	0.26m	1170lx (max)
2m	0.52m	292lx (max)
3m	0.79m	128lx (max)
4m	1.05m	73lx (max)

**SHARP**

contact Detail lighting for all .ies files

# INSTALLATION

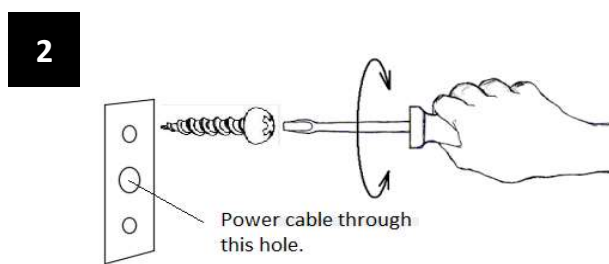
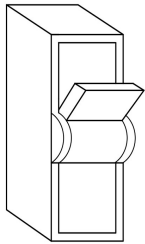


TECH NOTES: Ensure any mounting screws do not pierce cable insulation.  
**REDUCE CABLE SIZE SUITABLE TO FIT THE TERMINAL BLOCK.**

**WARNING:** Ensure power is isolated before undertaking any electrical work. Check fitting type to ascertain correct wiring type if low voltage fittings used (series or parallel) as incorrect wiring will damage the fittings

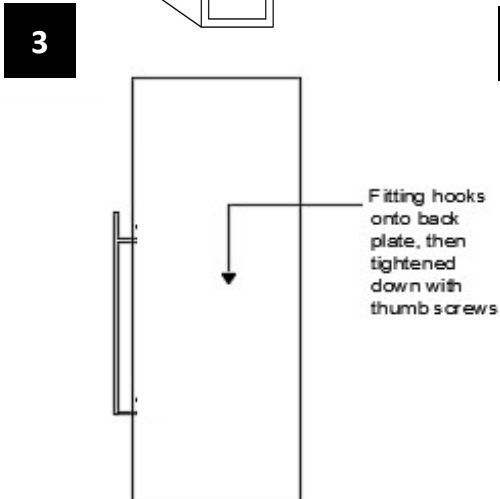
If in doubt about any electrical connection, or selection of suitable lamps or drivers (where required) please consult a qualified electrician. Any fitting used in external or bathroom locations should be IP rated as required according to the zone in which they are located. In such instances all connections should also be of suitable type, as should enclosures for drivers.

**1** Turn off power!

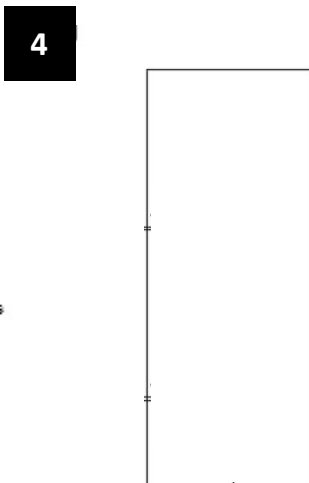


**1) Isolate power prior to fitting. Establish location for remote driver if applicable.**

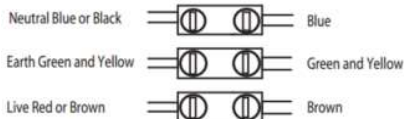
**2) screw mounting plate to wall securely**



**3) connect wiring, and install wall light onto plate, CONNECT TO TERMINAL BLOCK. REDUCE CABLE SIZE SUITABLE TO FIT THE TERMINAL BLOCK**



**4) insert lamp units into lamp holders and insert into body.**



**OUTDOOR FIXTURES REQUIRE CORRECT IP CONNECTION**